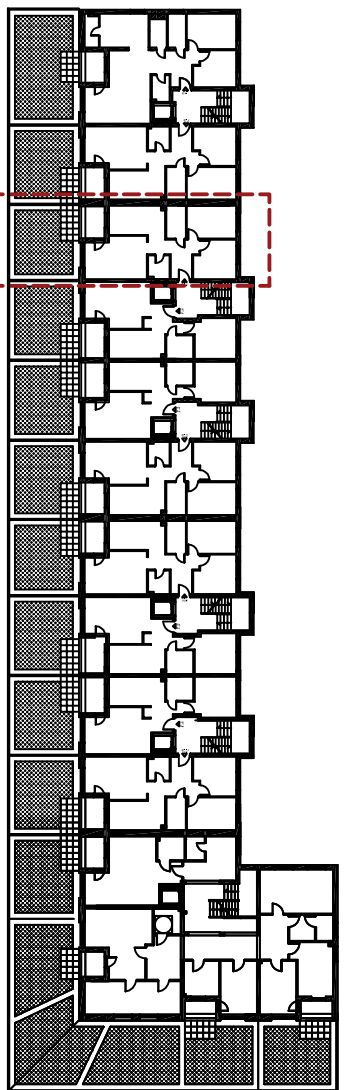
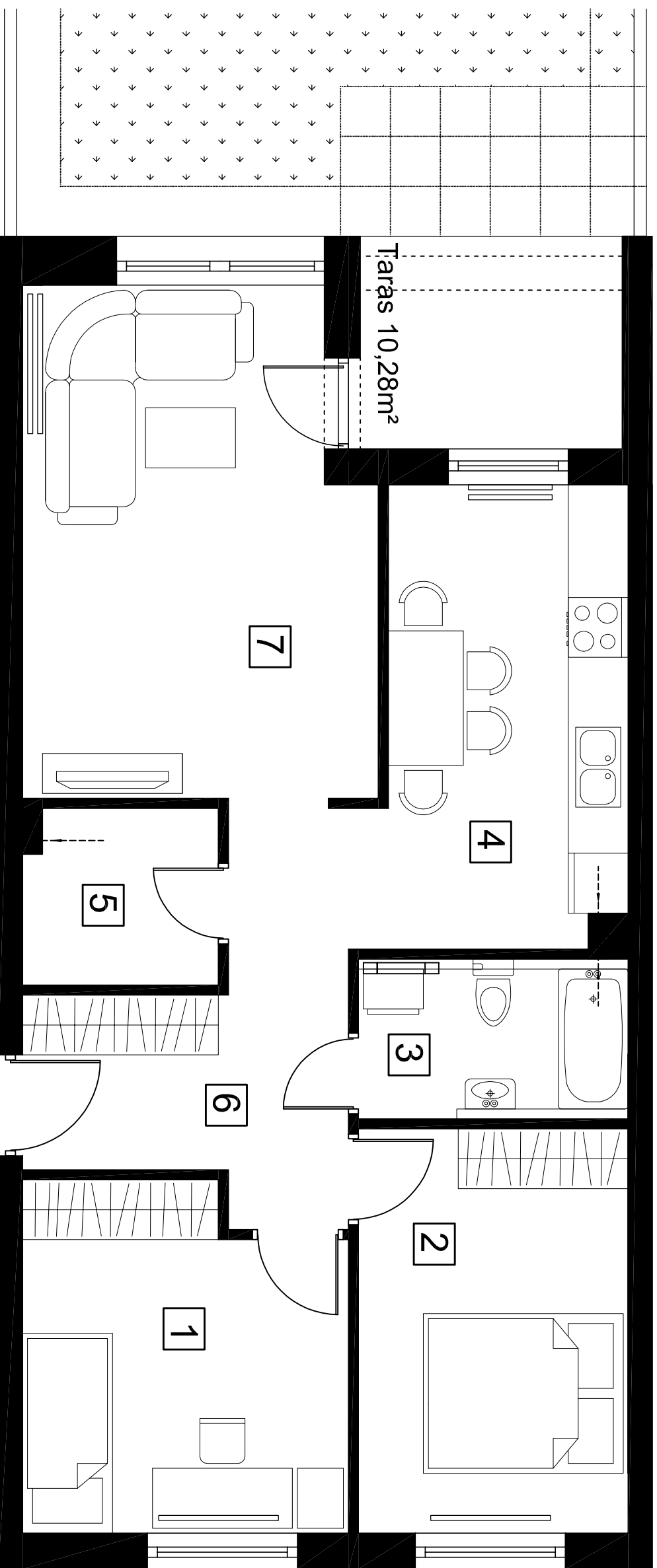


# MIESZKANIE NR 1.3 - 66,83m<sup>2</sup>



## ZESTAWIENIE POWIERZCHNI

| Lp            | nazwa         | pow. brutto               |
|---------------|---------------|---------------------------|
| 1             | pokój         | 10,93m <sup>2</sup>       |
| 2             | pokój         | 10,76m <sup>2</sup>       |
| 3             | łazienka      | 4,32m <sup>2</sup>        |
| 4             | kuchnia       | 11,01m <sup>2</sup>       |
| 5             | schowek       | 3,37m <sup>2</sup>        |
| 6             | przedpokój    | 9,23m <sup>2</sup>        |
| 7             | pokój dzienny | 17,21m <sup>2</sup>       |
| <b>RAZEM:</b> |               | <b>66,83m<sup>2</sup></b> |